

DRY LAKE VINEYARD



910 Dry Lake Road,
Mason, WA
20 acres

\$1,550,000



**BERKSHIRE
HATHAWAY**
HomeServices

Notice

Neither Berkshire Hathaway HomeServices Northwest Real Estate (“Broker”) or Owners make any representation or warranties as to the accuracy of the information contained in this offering circular. The offering circular was prepared using information and assumptions believed to be accurate and reasonable. However, it is the responsibility of those parties considering the offering to investigate and verify all information and the suitability for their intended uses. Owner and Broker expressly disclaim any and all liability for representations or warranties, expressed or implied, contained in or omitted from, this offering circular or any other written or oral communication regarding the offering, except for that which is set forth in a definitive contract hereafter mutually executed and delivered, if any.

Buyer to do own due diligence, no warranties or guaranties made.



Table of Contents

04	Property Overview
06	Maps
07	Property Outline
08	Vineyard Soils
10	Vineyard Map
11	Photo Gallery



ESTATE PROPERTIES
VINEYARDS + COUNTRY LIVING

A DIVISION OF BERKSHIRE HATHAWAY HOMESERVICES NORTHWEST REAL ESTATE



vineyardandcountryliving.bhhsnw.com



503.212.2735



vineyardandcountry@bhhsnw.com



Vineyard and Country Estate Properties



[vineyard.and.country.living](https://www.instagram.com/vineyard.and.country.living)



Overview

Excellent, investment-quality irrigated vineyard with 16.5 planted acres. Overlooking beautiful Lake Dry and just minutes from Lake Chelan.

Ample irrigation water. Professionally managed, with 5-year average of around 4.5 tons/acre. The vineyard consists of two separate tax lots - largely divided by “white fruit” and “red fruit.”

Varietals include: Malbec, Merlot, Pinot Gris, Chardonnay & Riesling. A majority of the vine-acres were planted in 2010 & are firmly-established on well-drained silt-loam soils. Developed to produce high-quality fruit. Buried main-line feeds drip irrigation.

Owners would consider the sale of each lot separately. Improvements include a residential rental & shop/storage building.

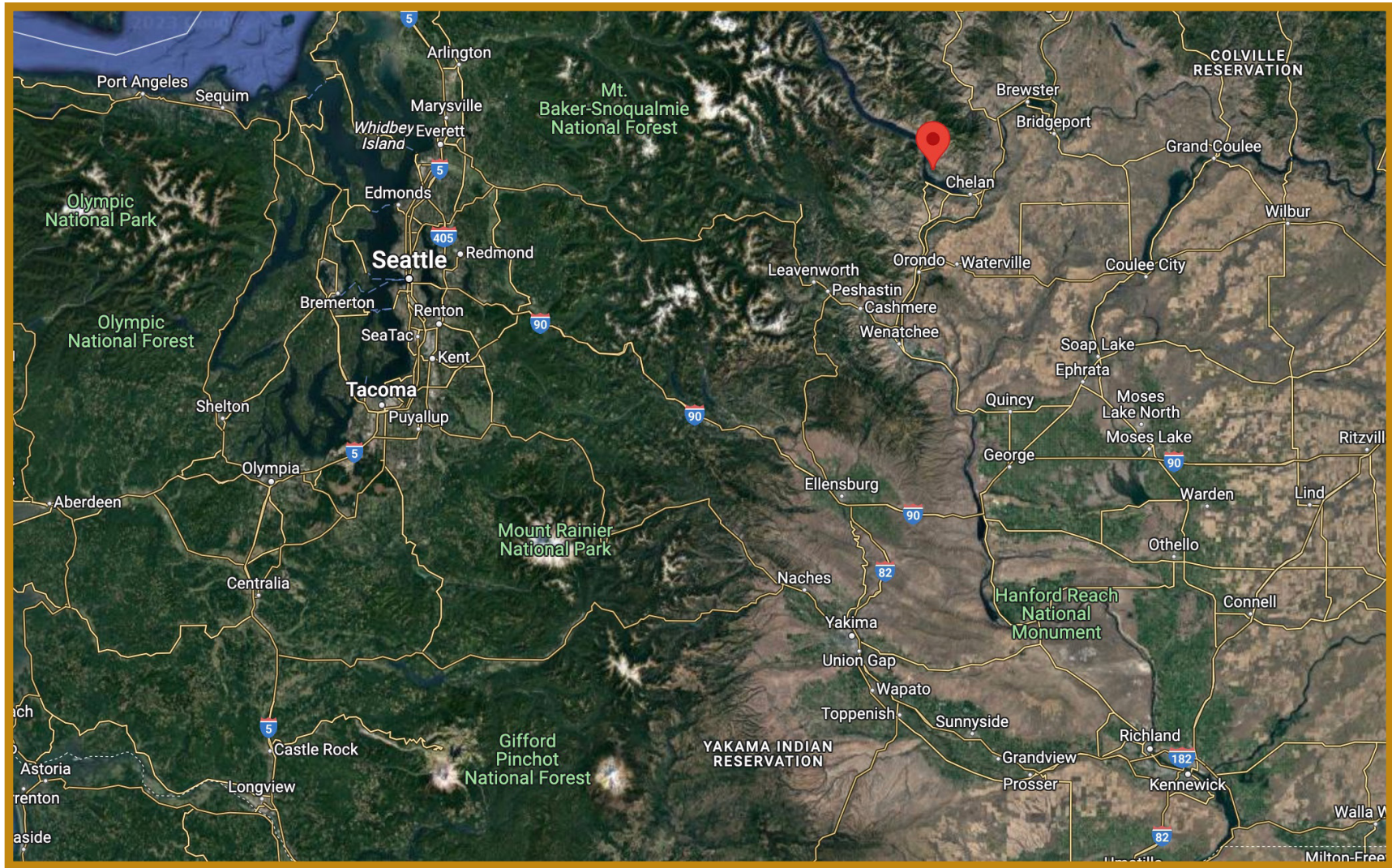
There are beautiful building sites with expansive views of Dry Lake and the mountains that are perfectly situated for a new owner’s residence.

Featuring:

- 16.5 planted & irrigated acres
- residential rental
- shop/storage building

Offered at \$1,550,000





Distances to Town

Chelan - 19 minutes

Spokane - 3 hours

Seattle - 3 hours, 20 minutes



Property Location



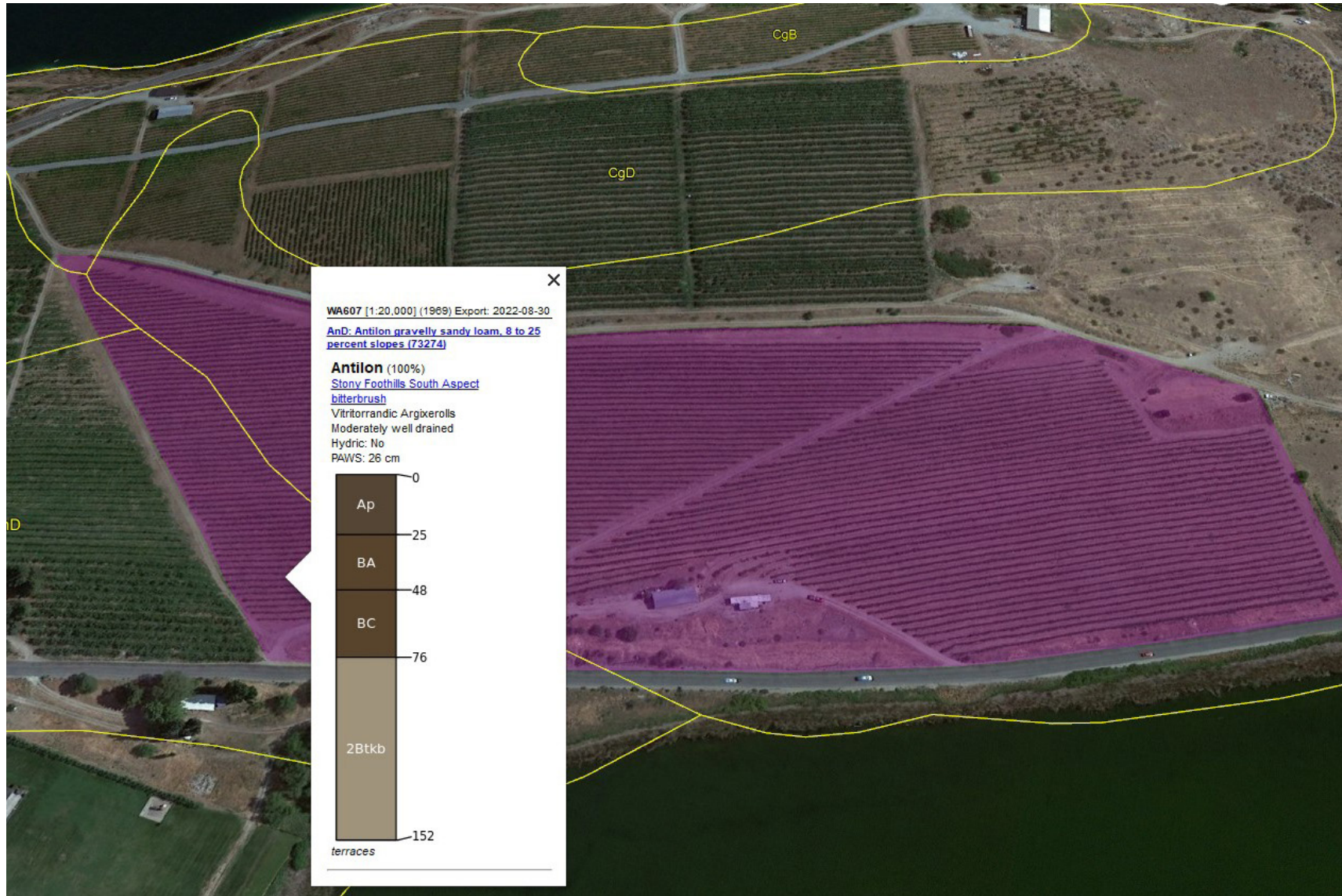
Property Outline



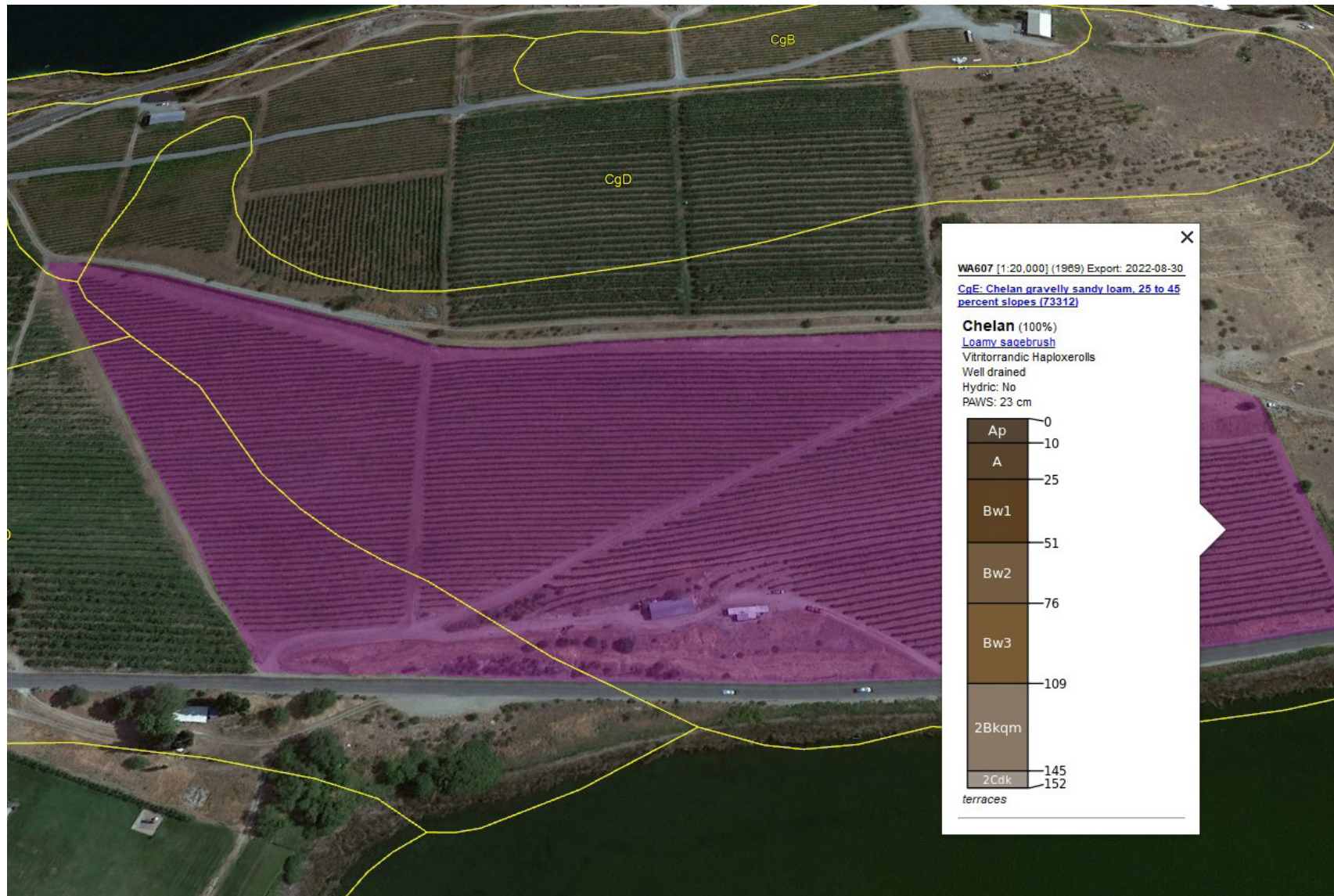
*Boundary lines and acreage size are approximations only.



Vineyard Soils



Vineyard Soils



Vineyard Map

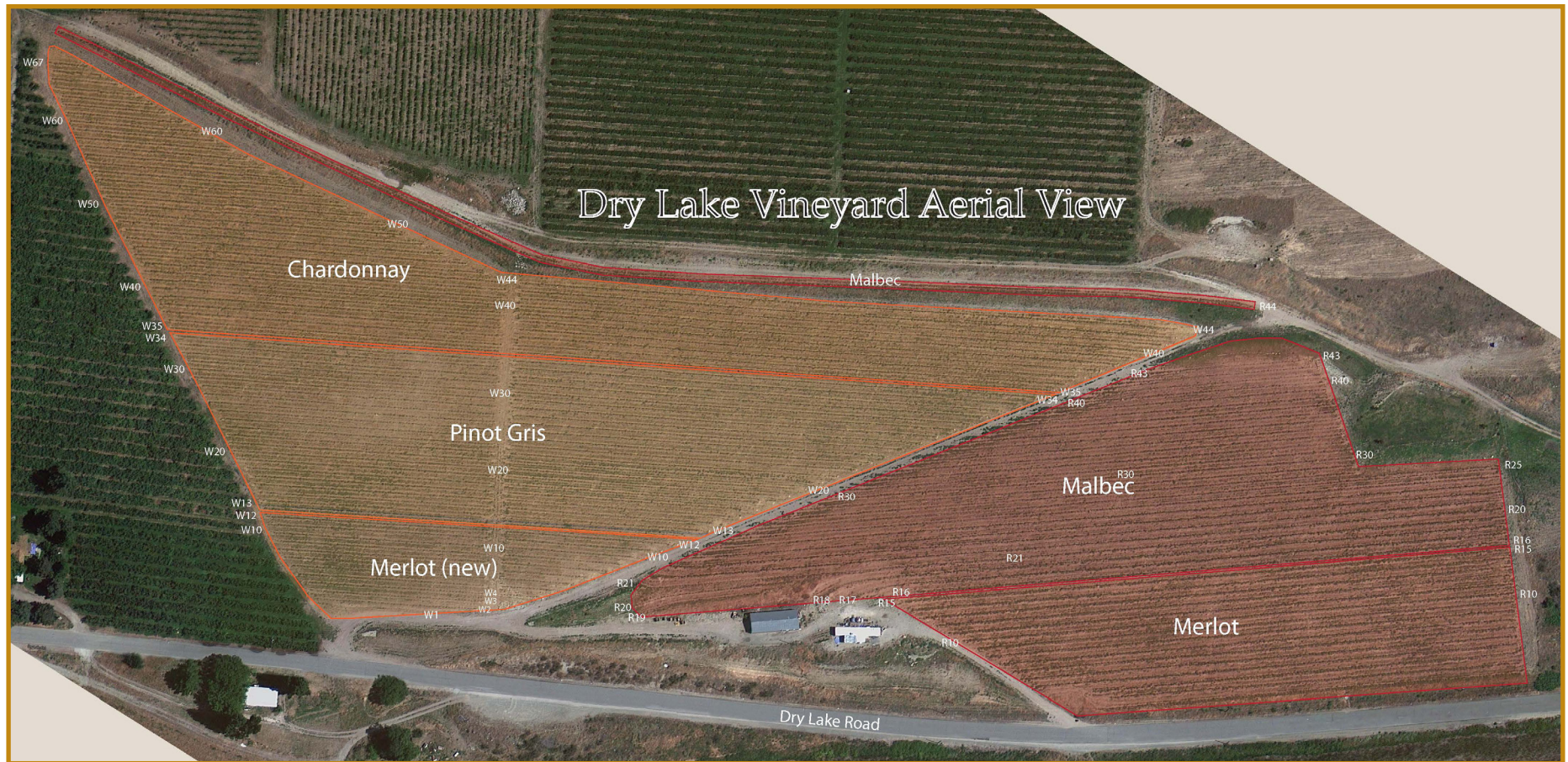


Photo Gallery











Brett Veatch: Brett has over 20 years of real estate experience in which time he has carefully cultivated an extensive network of industry professionals and investment clientele. Brett is well known for his work on some of the largest off-market land sales transactions in the Willamette Valley.

Kendall Jones: Kendall is the vineyard and winery specialist for Agri-Investment Services. She has her degree in Wine Business Management, Viticulture and Enology from Washington State University as well as a previous career in the wine industry. She has worked for some of the largest wineries in the Northwest, including Ste. Michelle Wine Estates and Argyle winery. She has a vast network of industry contacts in wine business, vineyard development and vineyard management.



ESTATE PROPERTIES
VINEYARDS + COUNTRY LIVING

A DIVISION OF BERKSHIRE HATHAWAY HOMESERVICES NORTHWEST REAL ESTATE

